

# For Lease

2094 Nickerson Boulevard  
Hampton, Virginia 23663



**For Additional Information Please Contact**



**Vince Campana**

1313 Jamestown Road Suite 201

Williamsburg, Virginia 23185

[www.CWCREW.net](http://www.CWCREW.net)

**757.209.2990**

# For Lease

2094 Nickerson Boulevard  
Hampton, Virginia 23663

- Description:** This offering consists of a 1,400 square foot retail suite located at the **Marketplace at Nickerson Shopping Center** in Hampton, Virginia. The suit is the last available unit at the center and abuts the Brand New Dollar Tree / Family Dollar Store. There is both a front door entry and a rear door entry to the suite, as well as an ADA compliant bathroom, and one demising wall that separates the show room area from the rear entry. As further show in this package, the space is 20ft. wide by 70ft. deep and is **available immediately!**
- Suite Size:** 1,400 Square Feet.
- Signage:** Prospective Tenants will have the building's facia area for their signage.
- Parking:** There is an abundance of shared parking at the center.
- Lease Rate:** \$2,250.00 Month – NNN.



**Vince Campana**  
1313 Jamestown Road Suite 201  
Williamsburg, Virginia 23185  
[www.CWCREW.net](http://www.CWCREW.net)

**757.209.2990**

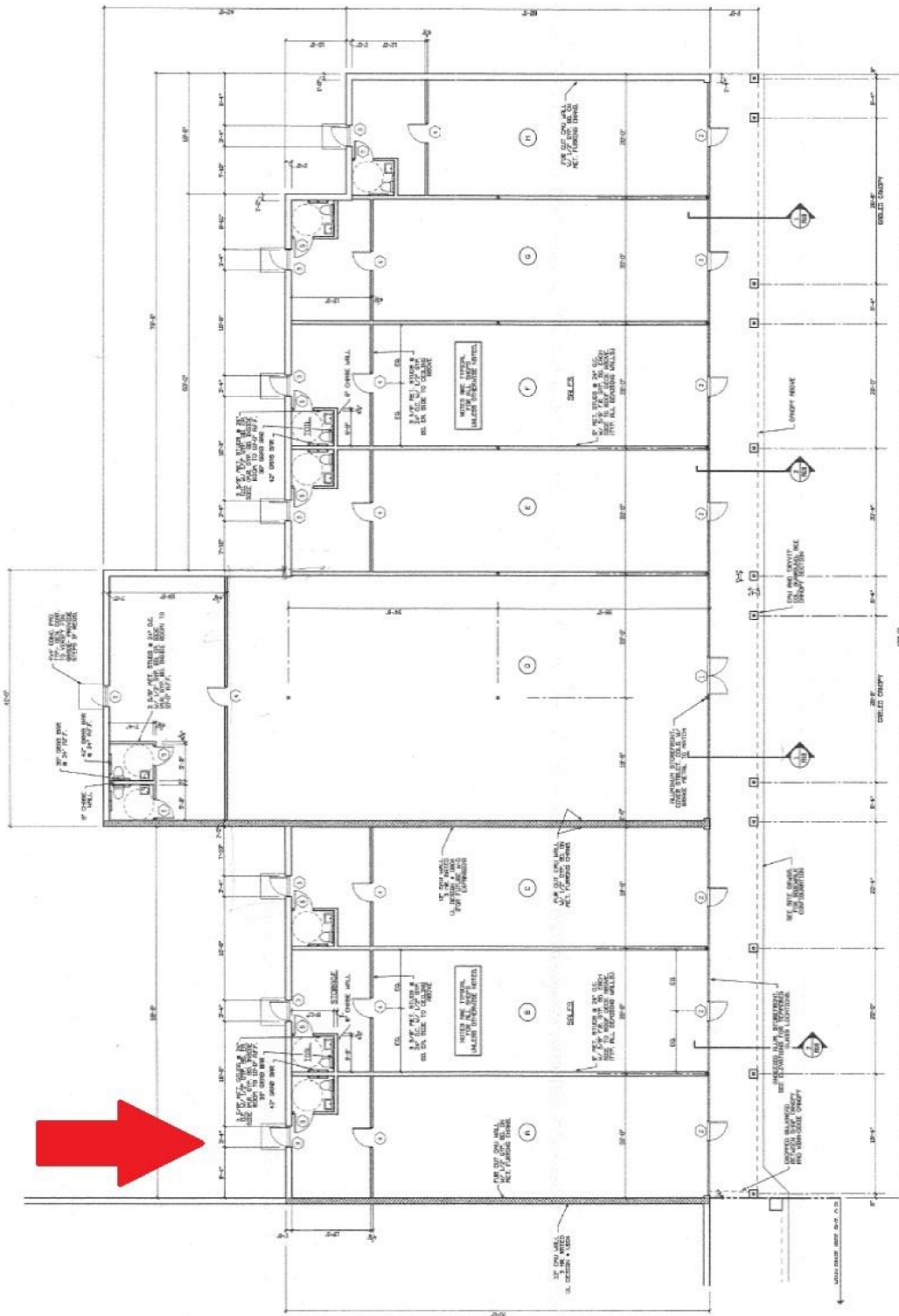
*This information was obtained from sources deemed to be reliable, but is not warranted.  
This offer subject to errors and omissions, or withdrawal, without notice.*

# Exterior Photograph



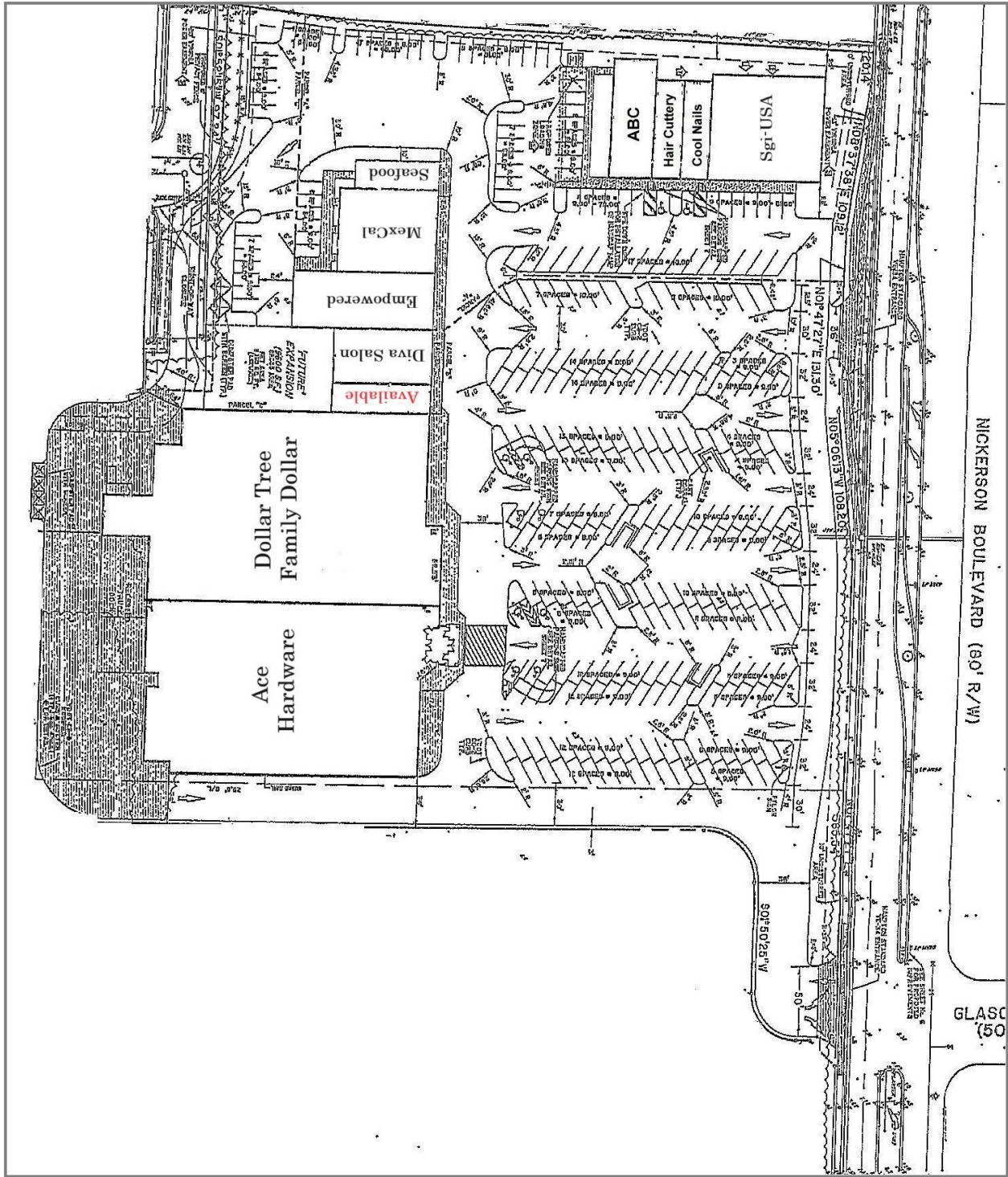
*This information was obtained from sources deemed to be reliable, but is not warranted.  
This offer subject to errors and omissions, or withdrawal, without notice.*

# Building Dimensions



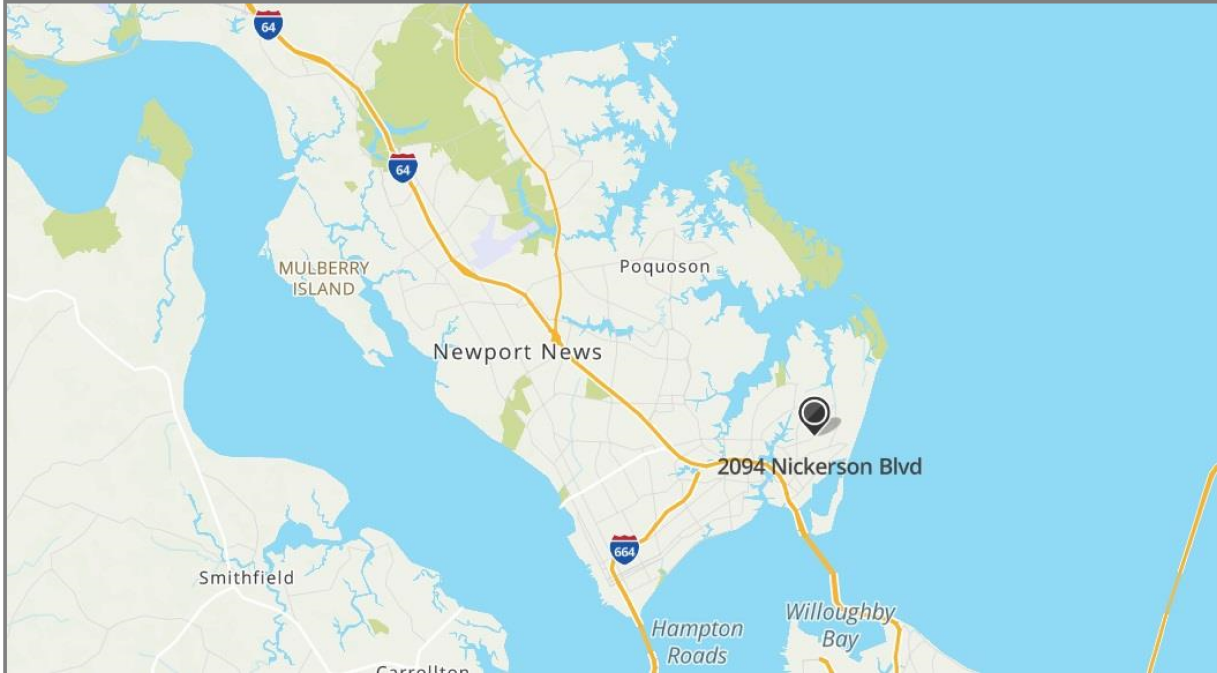
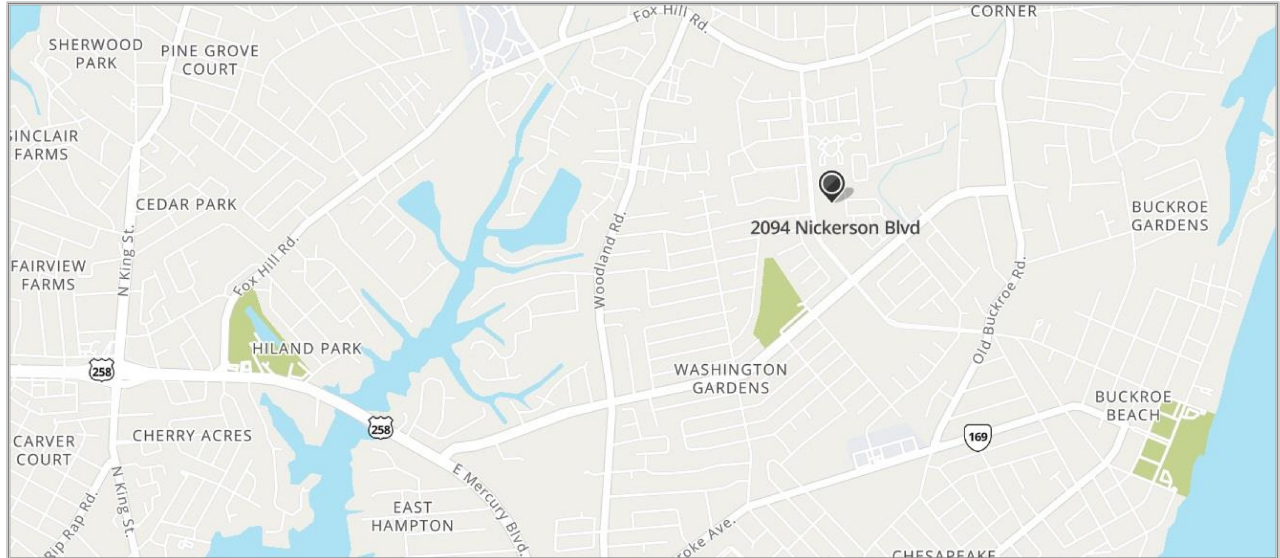
*This information was obtained from sources deemed to be reliable, but is not warranted.  
This offer subject to errors and omissions, or withdrawal, without notice.*

# Aerial



*This information was obtained from sources deemed to be reliable, but is not warranted.  
This offer subject to errors and omissions, or withdrawal, without notice.*

# Maps



*This information was obtained from sources deemed to be reliable, but is not warranted.  
This offer subject to errors and omissions, or withdrawal, without notice.*