

FOR LEASE RETAIL / OFFICE
410 Lightfoot Road, Williamsburg Virginia 23188

Lightfoot Crossing II



Suite C 1,800 sf Suite G 1,875 sf \$ 11.00 psf + Utilities

Landlord pays Common Area Maintenance, Taxes and Insurance

Roll Up Door in Rear Grade Level Access High Ceilings Glass Frontage

**York County Zoning EO
 Economic Opportunity**

**23,000 Daily Traffic Count
 on Route 199**

	<u>3 miles</u>	<u>5 miles</u>
2013 Population	19,165	38,829
Average Income	\$74,499	\$82,564



FOR ADDITIONAL INFORMATION, PLEASE CONTACT:

Janice Lewis, CCIM

1313 Jamestown Road, Suite 202 Williamsburg VA 23185
 757.327.0333

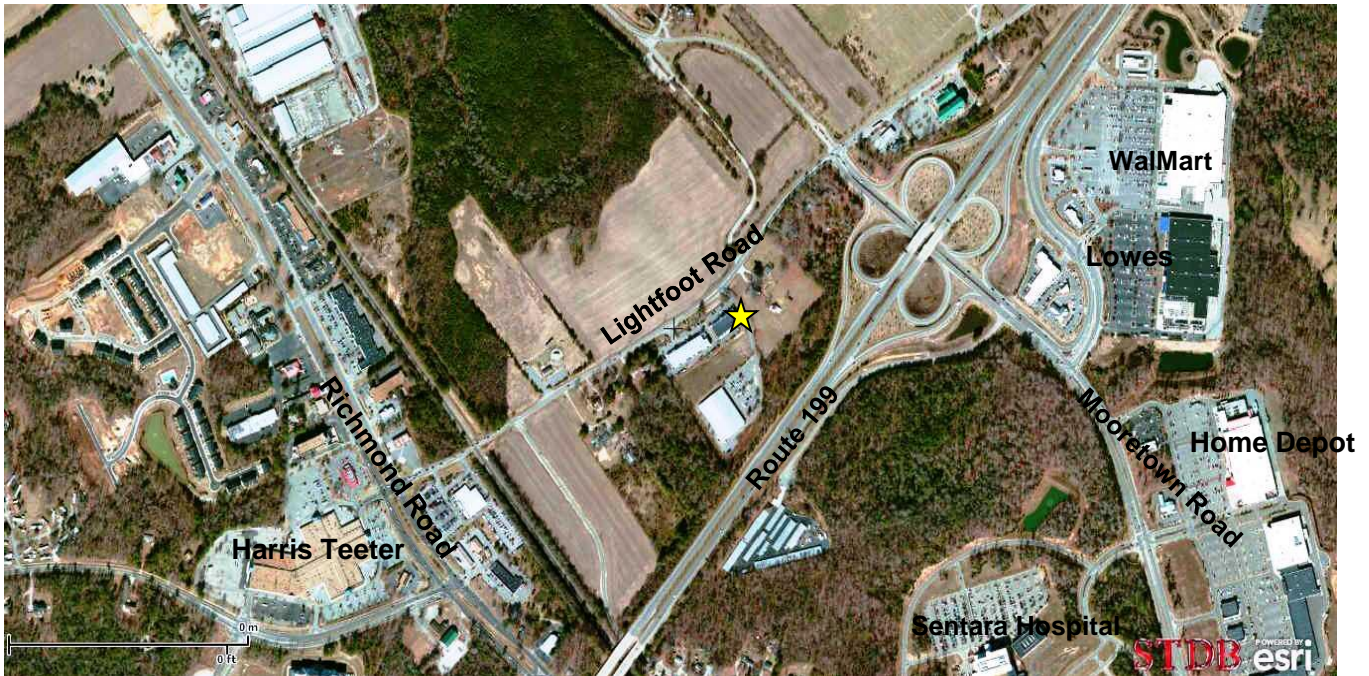
Janice@CampanaWaltz.com
www.CampanaWaltz.com

Campana Waltz
 Commercial Real Estate, LLC

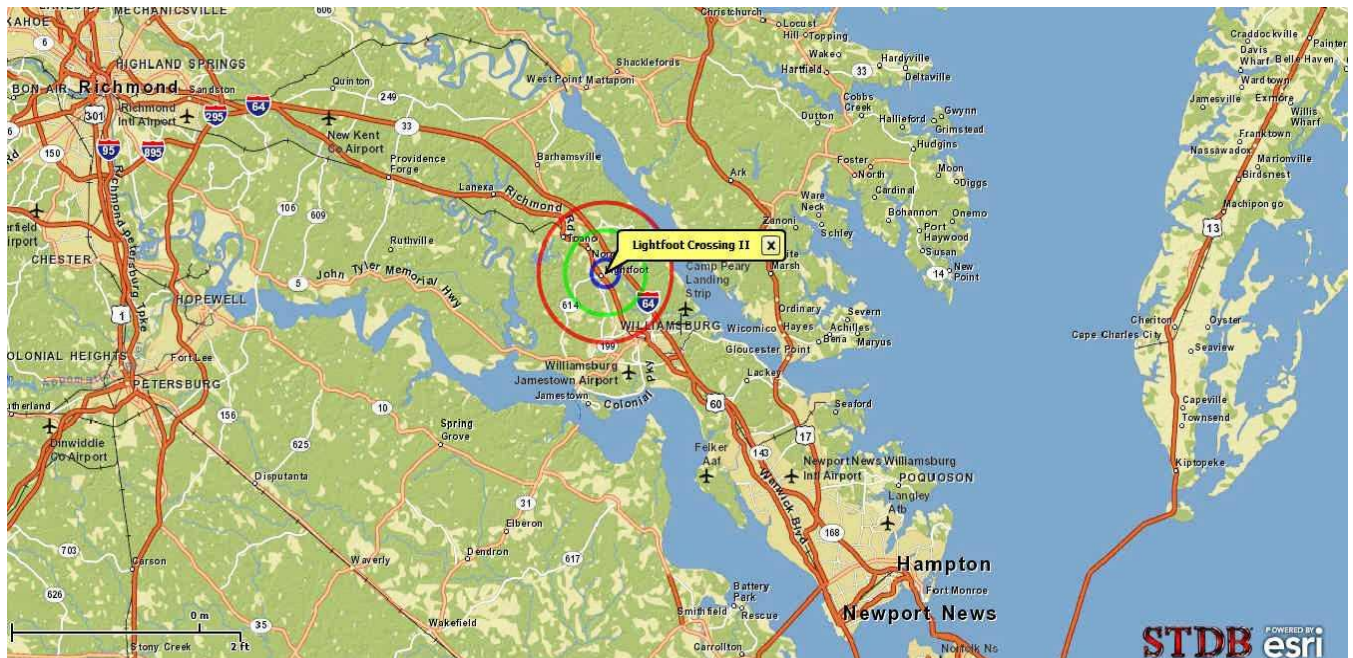
*This information was obtained from sources deemed to be reliable, but is not warranted.
 This offer subject to errors and omissions, or withdrawal, without notice.*

Lightfoot Crossing II

410 Lightfoot Road, Williamsburg Virginia 23188



Located in Williamsburg's Growth Corridor between Richmond and Hampton Roads Markets



FOR ADDITIONAL INFORMATION, PLEASE CONTACT:

Janice Lewis, CCIM

1313 Jamestown Road, Suite 202 Williamsburg VA 23185

757.327.0333

Janice@CampanaWaltz.com

www.CampanaWaltz.com

Campana Waltz
Commercial Real Estate, LLC