

New Town Office Condo for Lease

5388 DISCOVERY PARK BOULEVARD SUITE 220
WILLIAMSBURG VIRGINIA 23188



LOCATED ON
NEW TOWN'S
OFFICE CORRIDOR

3 STORY CLASS A
OFFICE BUILDING

LANDLORD PAYS
CONDO FEES

*Tenant pays \$14.00
per square foot plus
utilities, janitorial
and communication

\$1,223.83 A MONTH*

1,049 SQUARE FEET

WITH 4 PRIVATE OFFICES

RECEPTION AND KITCHEN

PRIVATE RESTROOM

SHARED BALCONY

2 STORAGE CLOSETS



FOR ADDITIONAL INFORMATION, PLEASE CONTACT:

Janice Lewis, CCIM

1313 Jamestown Road, Suite 202 Williamsburg VA 23185

757.327.0333

Janice@CampanaWaltz.com

www.CampanaWaltz.com

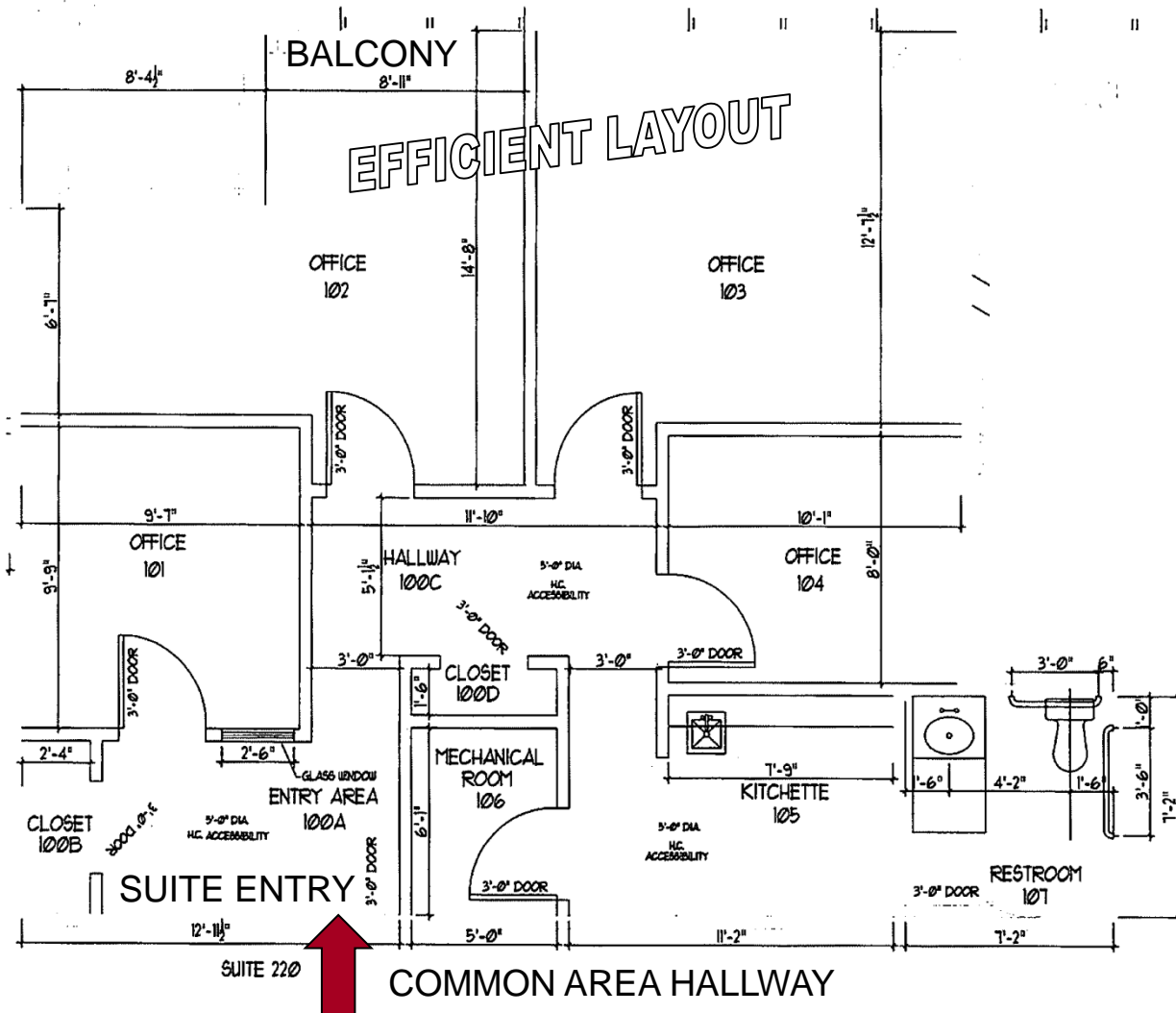
Campana Waltz

Commercial Real Estate, LLC

*This information was obtained from sources deemed to be reliable, but is not warranted.
This offer subject to errors and omissions, or withdrawal, without notice.*

5388 DISCOVERY PARK BOULEVARD
WILLIAMSBURG VIRGINIA 23188

SUITE 220
OFFICE LAY OUT



FOR ADDITIONAL INFORMATION, PLEASE CONTACT:

Janice Lewis, CCIM

1313 Jamestown Road, Suite 202 Williamsburg VA 23185

757.327.0333

Janice@CampanaWaltz.com

www.CampanaWaltz.com

Campana Waltz

Commercial Real Estate, LLC

This information was obtained from sources deemed to be reliable, but is not warranted. This offer subject to errors and omissions, or withdrawal, without notice.